

Algebra I
Function Notation Worksheet

Name: _____

Hour: _____ Date: _____

1. Evaluate the following expressions given the functions below:

$$g(x) = -3x + 1$$

$$f(x) = x^2 + 7$$

$$h(x) = \frac{12}{x}$$

$$j(x) = 2x + 9$$

a. $g(10) =$

b. $f(3) =$

c. $h(-2) =$

d. $j(7) =$

e. $h(a)$

f. Find x if $g(x) = 16$

g. Find x if $h(x) = -2$

h. Find x if $f(x) = 23$

i. CHALLENGE! *Extra Credit!* $g(b+c)$

j. CHALLENGE! *Extra Credit!* $f(h(x))$

2. Translate the following statements into coordinate points:

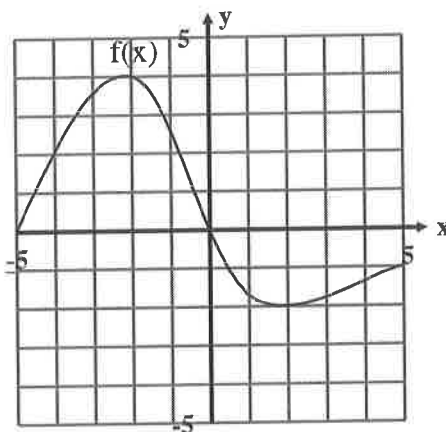
a. $f(-1) = 1$

b. $h(2) = 7$

c. $g(1) = -1$

d. $k(3) = 9$

3. Given this graph of the function $f(x)$:



Find:

a. $f(-4) =$

b. $f(0) =$

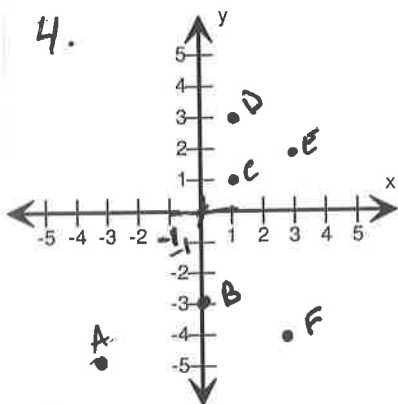
c. $f(3) =$

d. $f(-5) =$

e. x when $f(x) = 2$

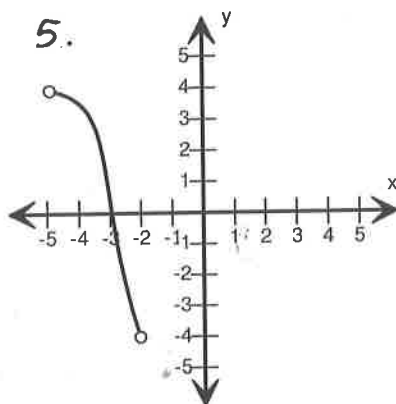
f. x when $f(x) = 0$

Find the Domain and Range for each graph.



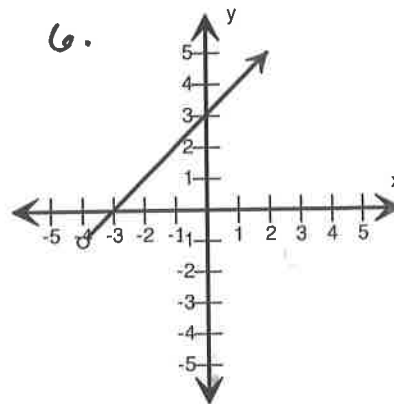
Domain : _____

Range : _____



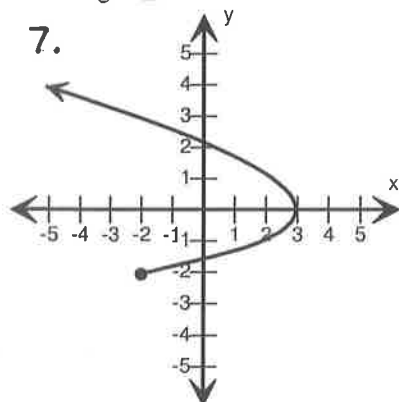
Domain : _____

Range : _____



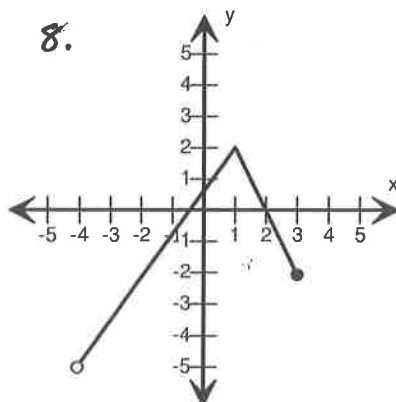
Domain : _____

Range : _____



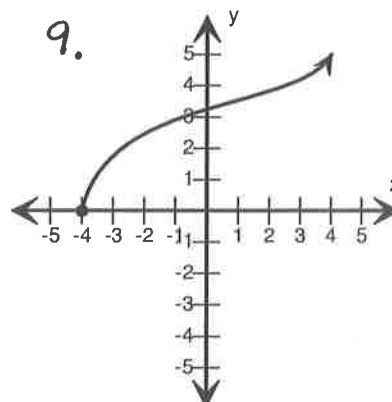
Domain : _____

Range : _____



Domain : _____

Range : _____



Domain : _____

Range : _____